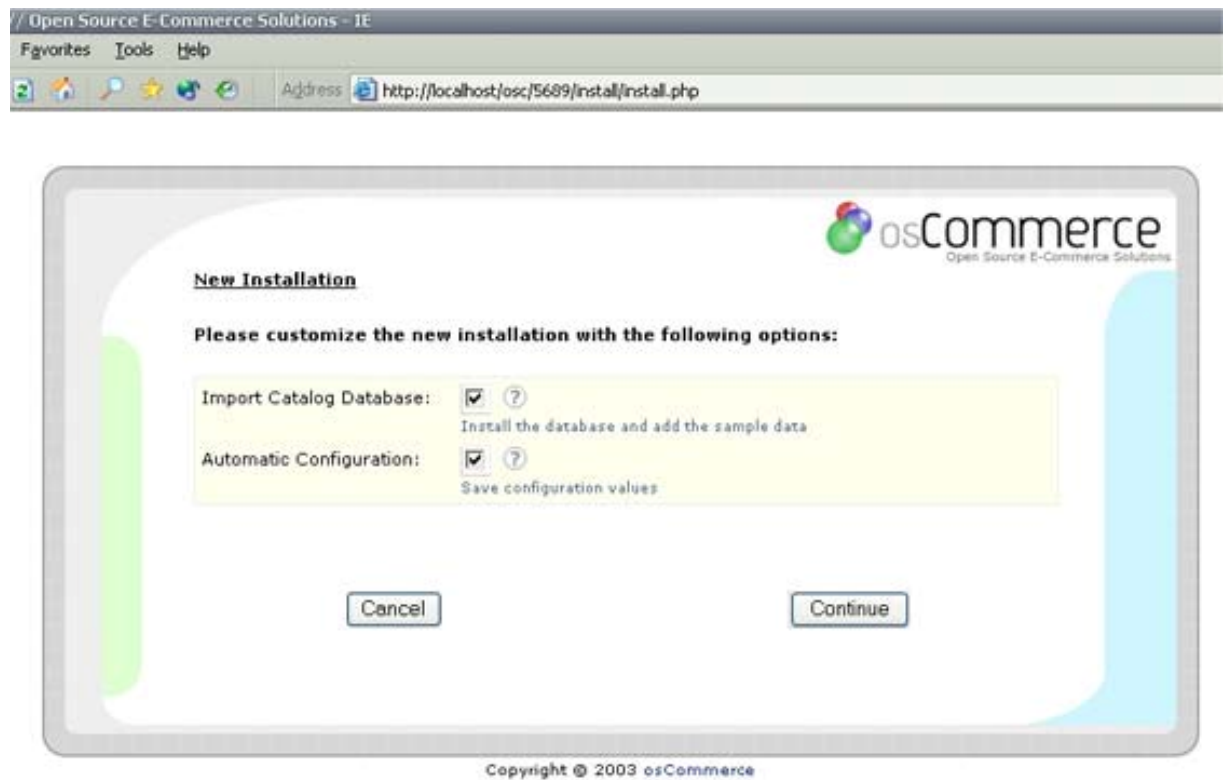


1. You should download **XXXX.zip** file from the website where your osCommerce template is stored. Once you've downloaded the file, you should unpack the archive and save the unpacked files to any folder on your computer.
2. Your archive manager will create **XXXX** file. You should rename it using **shop** as the new name. Then copy it to the root catalogue of your web server.
3. Type **http://YOUR\_SITE/shop/** in your browser (**YOUR\_SITE** – is an address of your web server)



If you have any problems with your browser, try **http://YOUR\_SITE/shop/install/**. Check for the closing slash at the end of the URL, as some of the configurations of the web servers may not process URLs without the closing slash.

4. Click **Install** to get the next step.



5. For the correct installation check in both matchboxes (Import Catalogue Database and Automatic Configuration) and press **Continue**.

favorites Tools Help

Address <http://localhost/osc/5689/install/install.php?step=2>

**osCommerce**  
Open Source E-Commerce Solutions

**New Installation**

**Database Import**

Please enter the database server information:

Database Server:  ?  
Hostname or IP-address of the database server

Username:  ?  
Database username

Password:  ?  
Database password

Database Name:  ?  
Database Name

Persistent Connections: ☐ ?

Session Storage: ☒ Files ☐ Database ?

Copyright © 2003 osCommerce

As osCommerce uses database to store data, you should fill in all the fields to provide the information on your database server. osCommerce installing script will import values from the file **WEB\_ROOT/shop/install/oscommerce.sql** to the database you point to (**WEB\_ROOT** is the path to your web server's root catalogue).

**Database Server** – your database server address

**Username** – the name of the user who has rights to create and change databases and tables

**Password** – password of the user

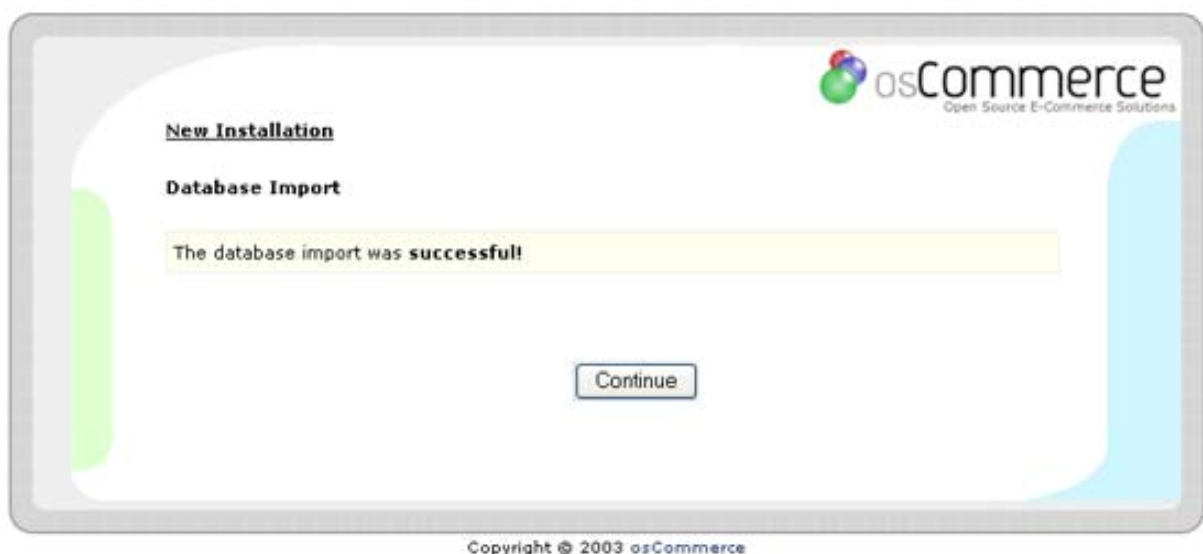
**Database Name** – the name of your osCommerce database

**Session Storage** – special storage to keep sessions' values


6. Press Continue for the next step. osCommerce will process the test connection to the database server now. You will be informed about the results. If osCommerce fails to process the connection, you should get in touch with your administrator to check your server settings.



7. Press **Continue** now. osCommerce will add the values to the database now. This process may take several minutes.



8. Check osCommerce configuration settings. It's recommended to keep these settings unless you have to change them. After checking the settings press **Continue**.



**New Installation**

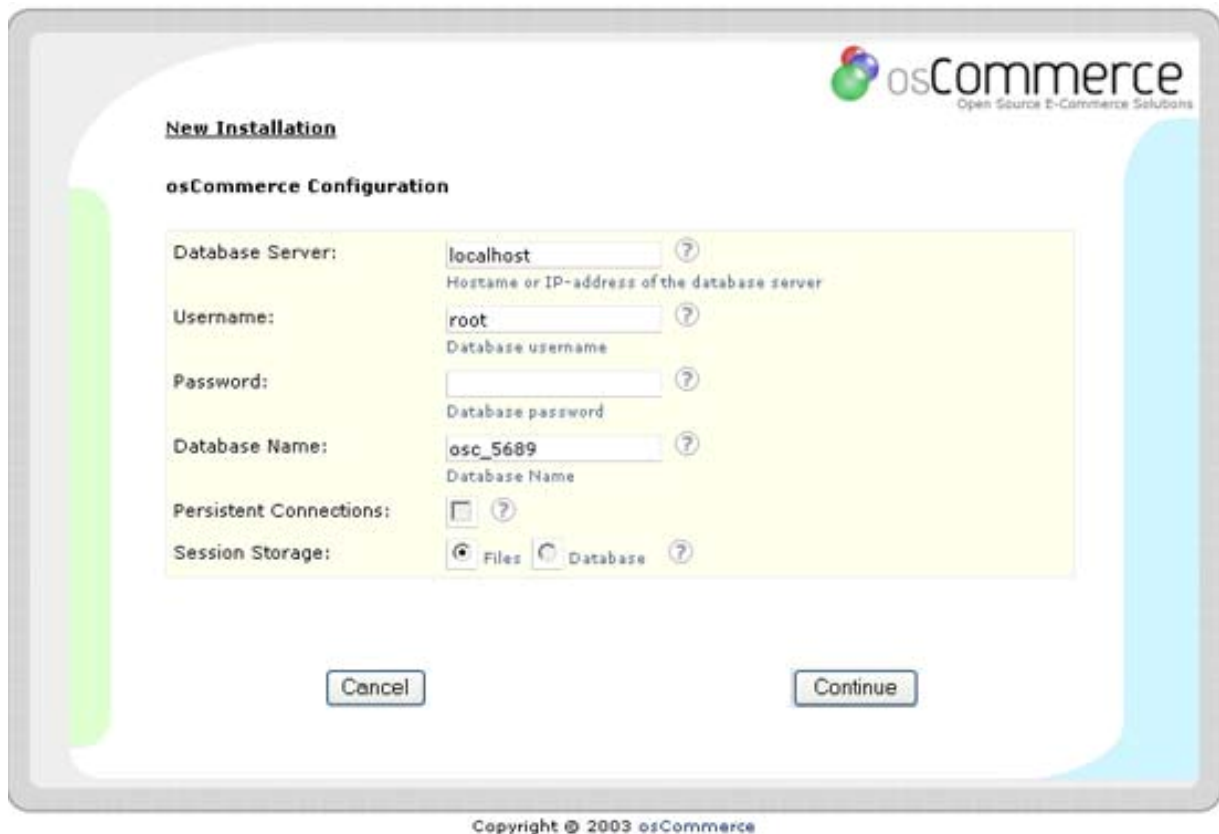
**osCommerce Configuration**

**Please enter the web server information:**

WWW Address:	<input type="text" value="http://localhost/osc/56"/>	?
	The full website address to the online store	
Webserver Root Directory:	<input type="text" value="d:/www/apache/apach"/>	?
	The server path to the online store	
HTTP Cookie Domain:	<input type="text" value="localhost"/>	?
	The domain to store cookies in	
HTTP Cookie Path:	<input type="text" value="/osc/5689/"/>	?
	The path to store cookies under	
Enable SSL Connections:	<input type="checkbox"/>	?

Copyright © 2003 osCommerce

9. We recommend that you save the settings with the form but create a new account (user) for OsCommerce.



The screenshot shows the 'New Installation' configuration window for osCommerce. The window has a light gray border and a white background. At the top right is the osCommerce logo with the tagline 'Open Source E-Commerce Solutions'. Below the logo, the text 'New Installation' is underlined, and 'osCommerce Configuration' is in bold. A yellow rectangular area contains the configuration fields: 'Database Server' (localhost), 'Username' (root), 'Password' (empty), 'Database Name' (osc\_5689), 'Persistent Connections' (unchecked checkbox), and 'Session Storage' (radio buttons for 'Files' and 'Database', with 'Files' selected). Each input field has a small question mark icon to its right. Below the yellow area are 'Cancel' and 'Continue' buttons. At the bottom center, it says 'Copyright © 2003 osCommerce'.

osCommerce  
Open Source E-Commerce Solutions

New Installation

**osCommerce Configuration**

Database Server:  ?  
Hostname or IP-address of the database server

Username:  ?  
Database username

Password:  ?  
Database password

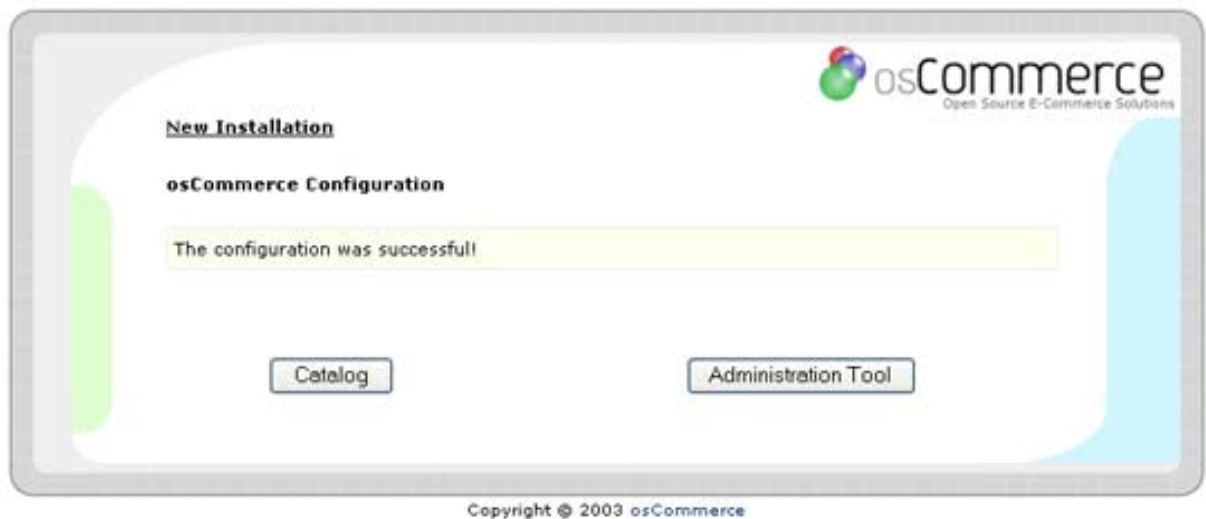
Database Name:  ?  
Database Name

Persistent Connections: ☐ ?

Session Storage: ☒ Files ☐ Database ?

Copyright © 2003 osCommerce

10. To finish the installation press **Continue**. You will be shown a notification about successful installation.



The screenshot shows the 'New Installation' success screen for osCommerce. The window has a light gray border and a white background. At the top right is the osCommerce logo with the tagline 'Open Source E-Commerce Solutions'. Below the logo, the text 'New Installation' is underlined, and 'osCommerce Configuration' is in bold. A yellow rectangular area contains the message 'The configuration was successfull'. Below this area are 'Catalog' and 'Administration Tool' buttons. At the bottom center, it says 'Copyright © 2003 osCommerce'.

osCommerce  
Open Source E-Commerce Solutions

New Installation

**osCommerce Configuration**

The configuration was successfull

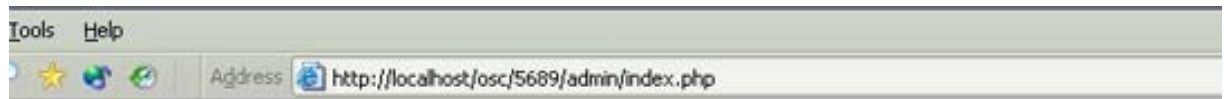
Copyright © 2003 osCommerce

11. To have a look at your on-line shop, press **Catalogue**.





12. To make any changes to your on-line shop, you should type **http://YOUR\_SITE/shop/admin/** with your browser. We recommend that you rename your admin folder with any other secret name (**secret\_name**) and enter the admin section using this name **http://YOUR\_SITE/shop/secret\_name/**



A screenshot of the osCommerce Administration interface. The page has a dark blue background with a white sidebar on the left. The sidebar contains links to "osCommerce", "Support Site", "Support Forums", "Mailing Lists", "Bug Reports", "FAQ", "Live Discussions", "CVS Repository", and "Information Portal". Below these are sections for "Orders" (Pending: 0, Processing: 0, Delivered: 0) and "Statistics" (Customers: 1, Products: 27, Reviews: 1). At the bottom of the sidebar, a message states "You are not protected by a secure SSL connection." The main content area is titled "Choose an action.." and features a grid of icons and links for various administrative tasks: "Configuration" (My Store, Logging, Cache), "Modules" (Payment, Shipping), "Catalog" (Contents, Manufacturers), "Locations / Taxes" (Countries, Tax Zones), "Customers" (Customers, Orders), "Localization" (Currencies, Languages), "Reports" (Products, Orders), and "Tools" (Backup, Banners, Files). A language dropdown menu in the top right corner is set to "English".

E-Commerce Engine Copyright © 2003 osCommerce  
osCommerce provides no warranty and is redistributable under the GNU General Public License

Powered by osCommerce